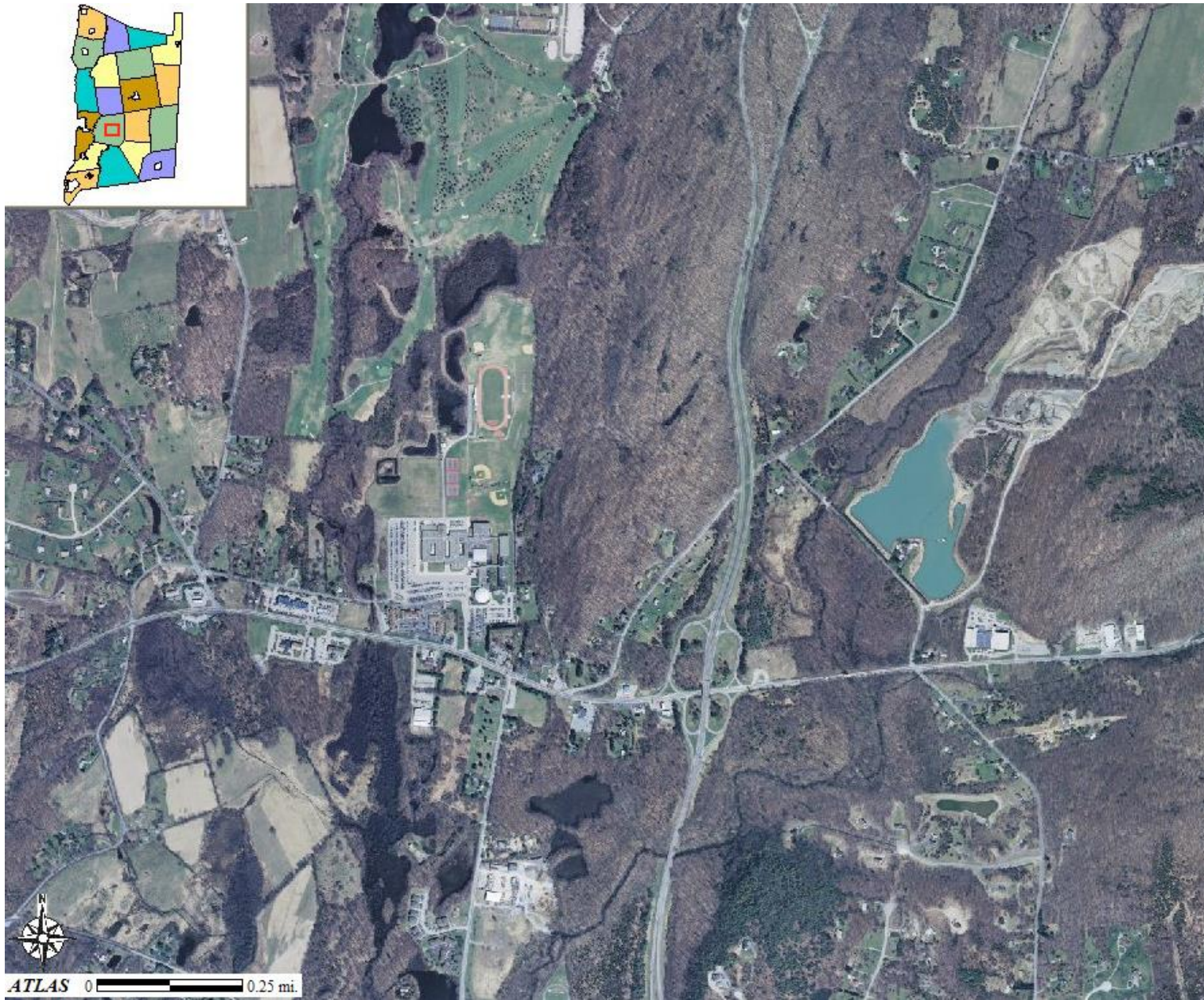
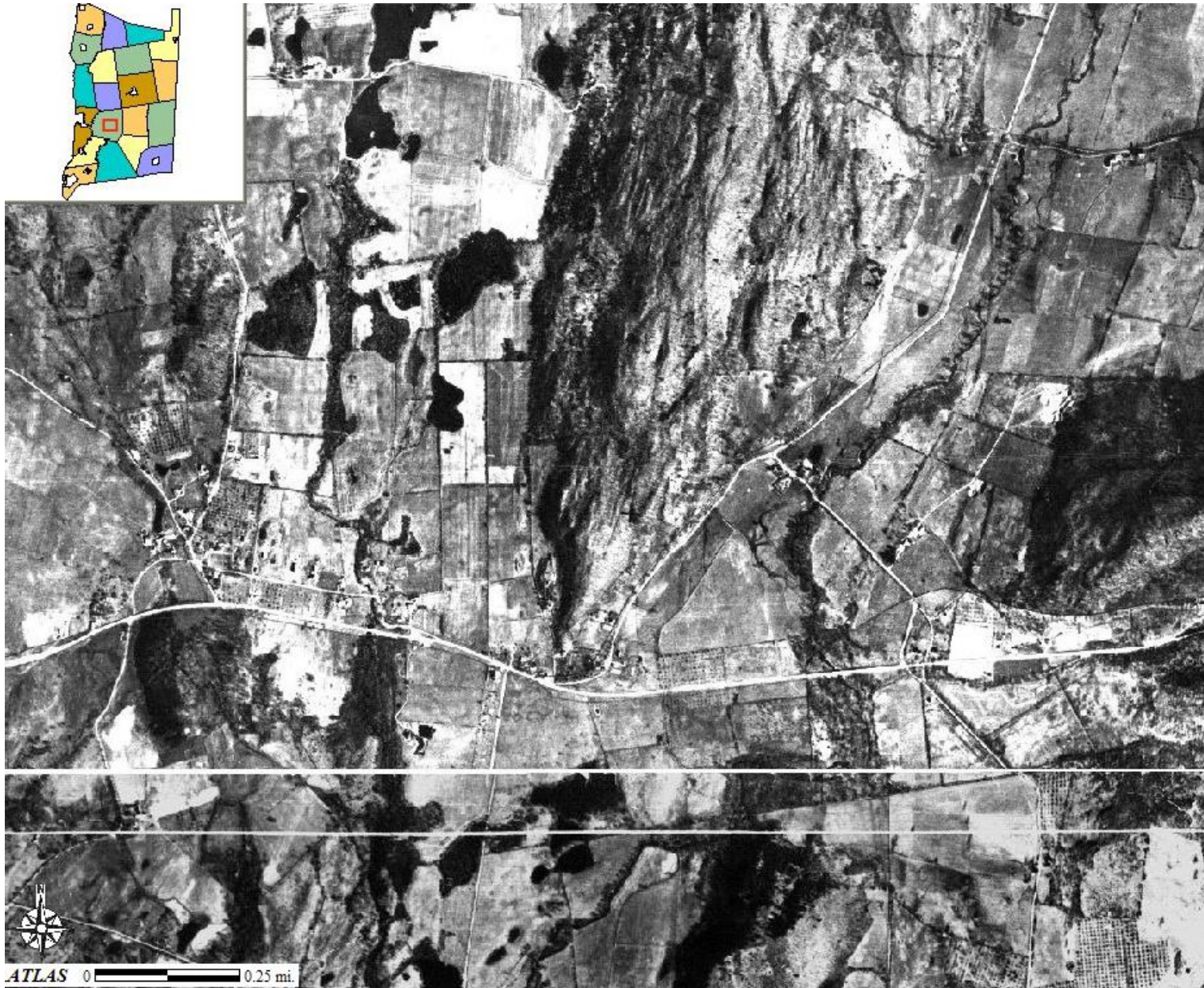


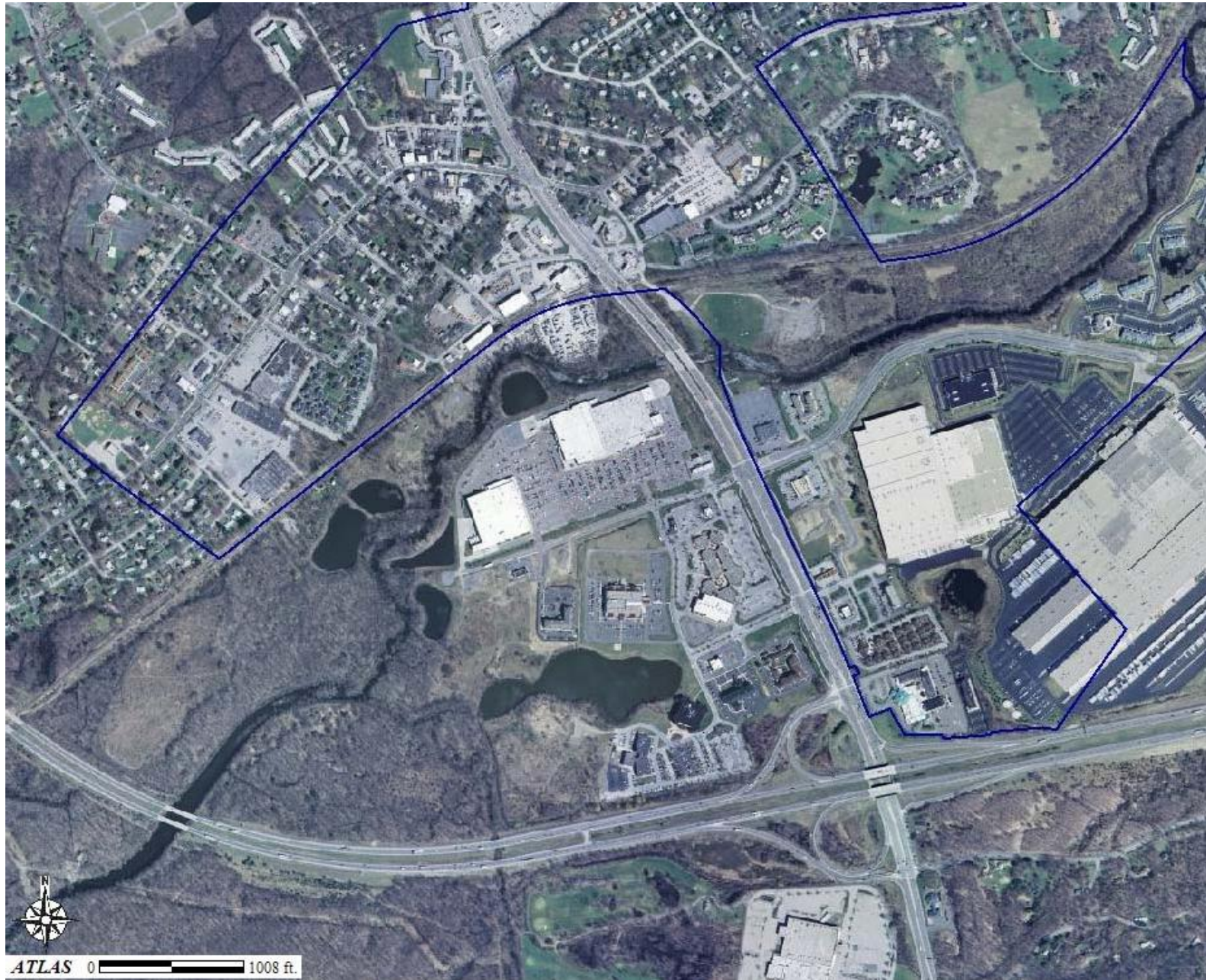
Dutchess County Aerial Photos: 1936 and 2004



2004: Arlington High School in middle left, Taconic Parkway runs north/south, Rt 55 runs east/west



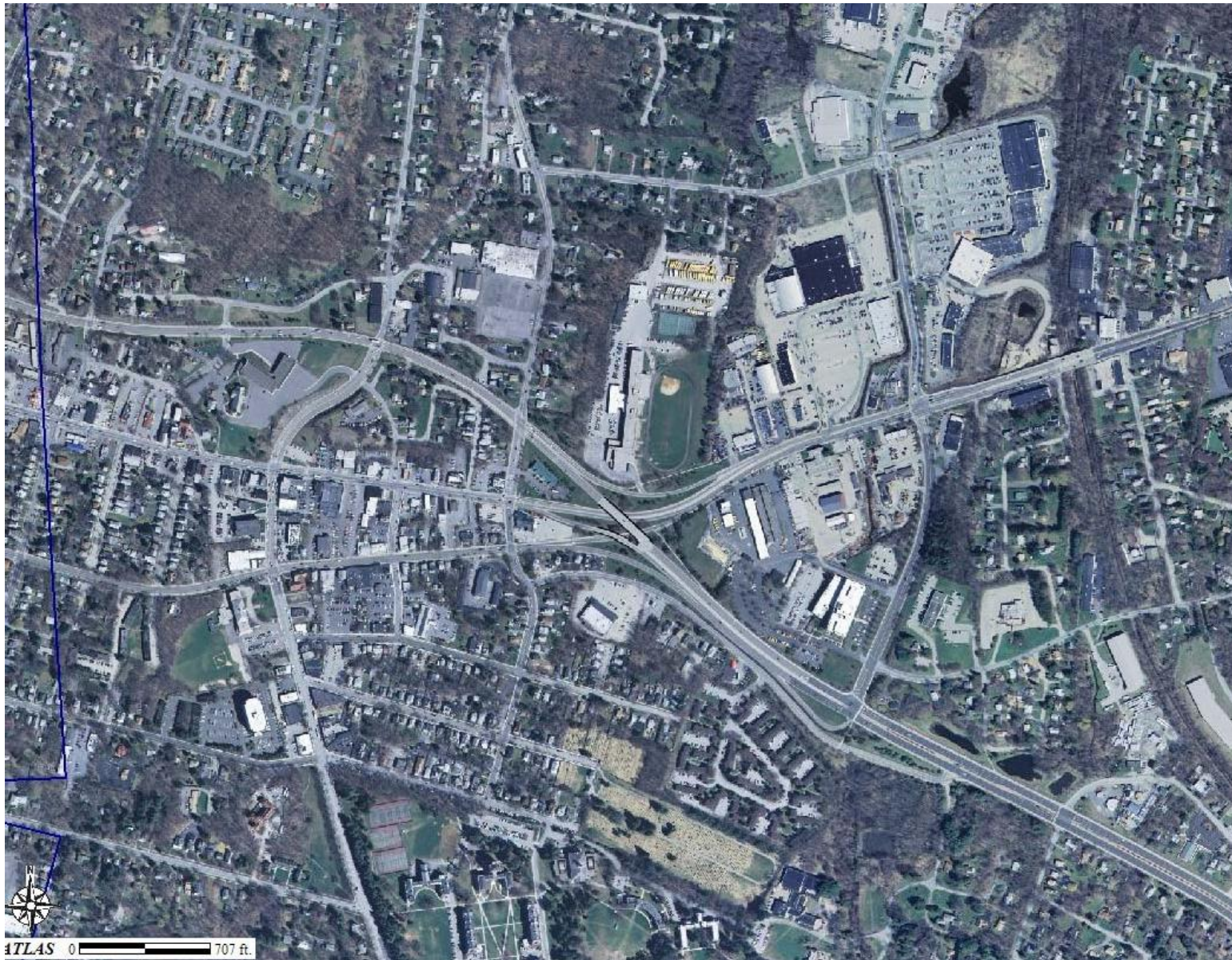
1936: Arlington; Rt 55 runs east/west (Taconic does not exist)



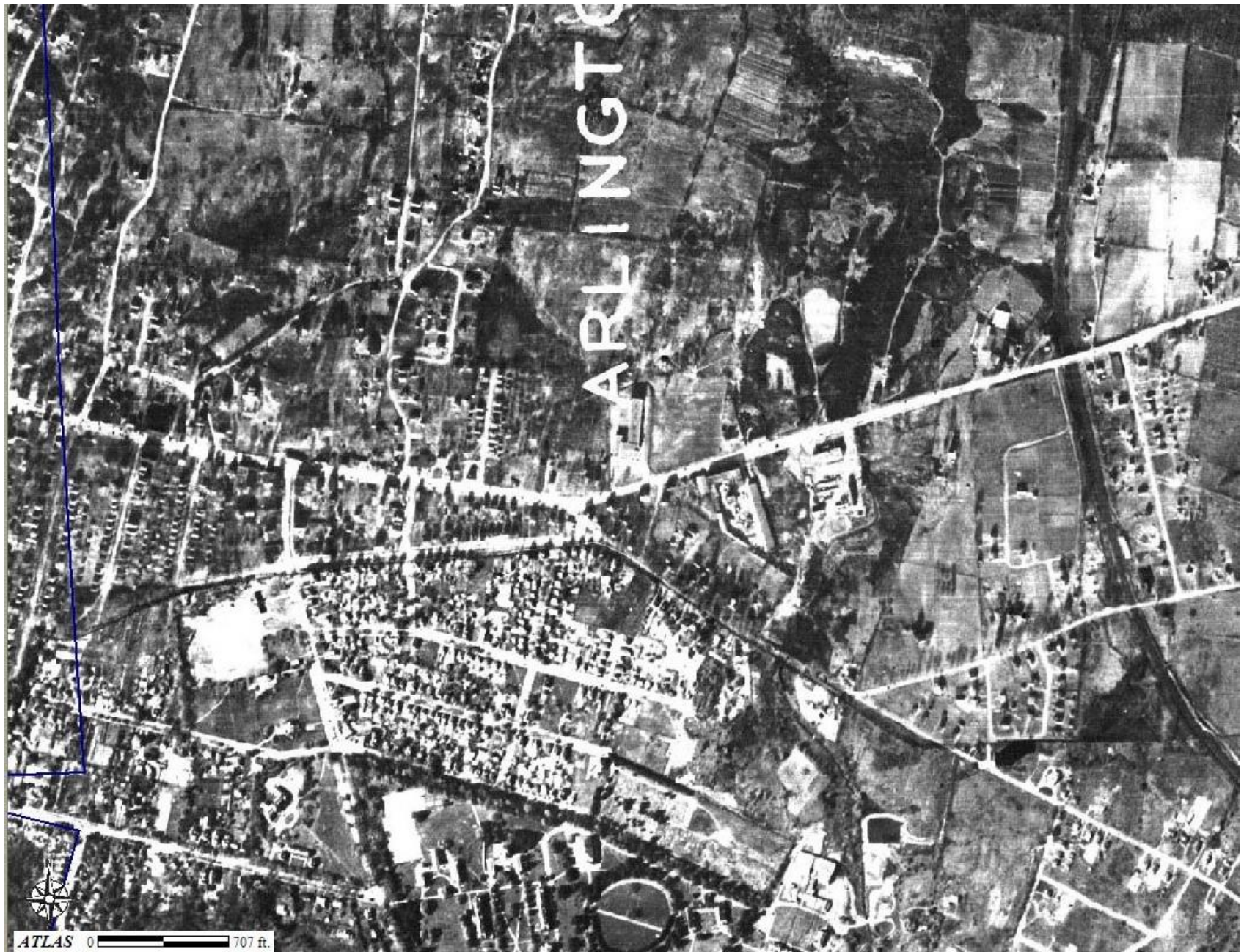
2004: Fishkill, intersection of I-84 and Rt-9. GAP distribution center is on the right hand side. Retention ponds can be seen below the parking lots of the GAP, Wal-Mart (on the left of Rt 9) and the other commercial buildings.



1936: Fishkill; Rt 9 is visible (no I-84)



2004: The intersection of Rt 44 and 55 near K-Mart and Stop and Shop on the east end of Poughkeepsie.



1936: Intersection of Rt 44 and 55.



2004: Pleasant Valley along Rt 44; Wappingers Creek on the right hand side



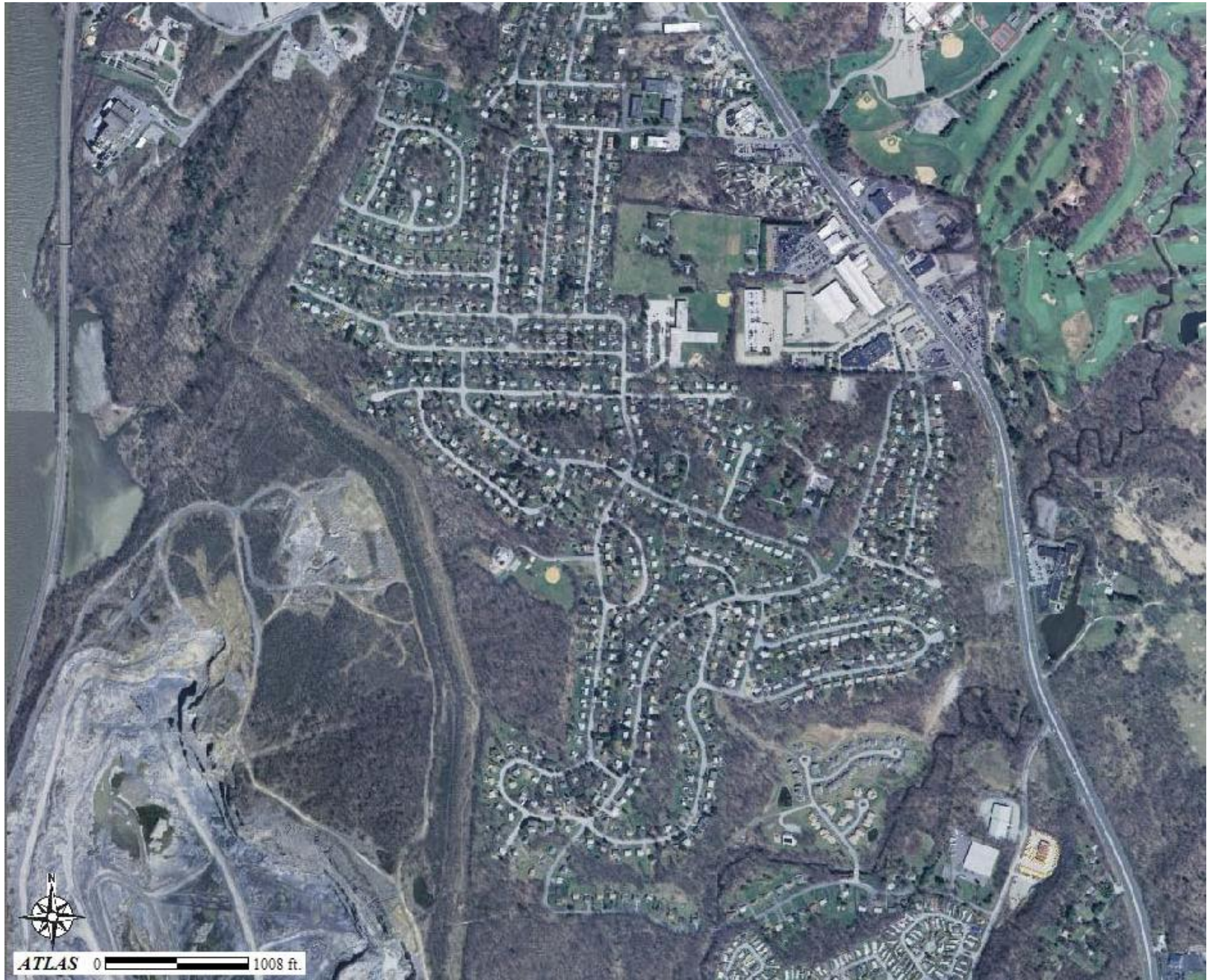
1936: Pleasant Valley along Rt 44



2004: Poughkeepsie Galleria on right hand side,
gravel quarry next to river



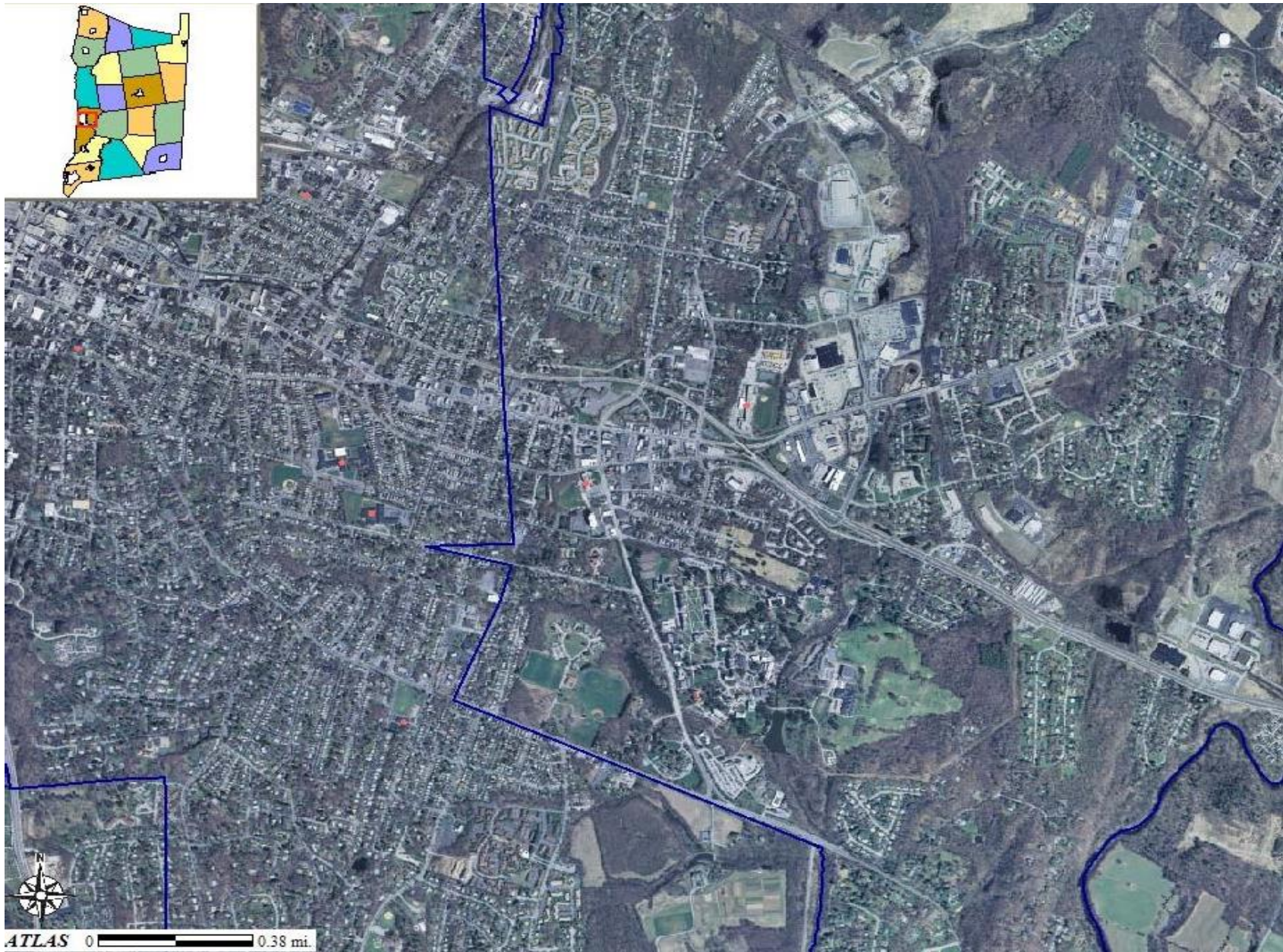
1936: Rt 9, site of current Galleria mall,
small quarry visible next to river



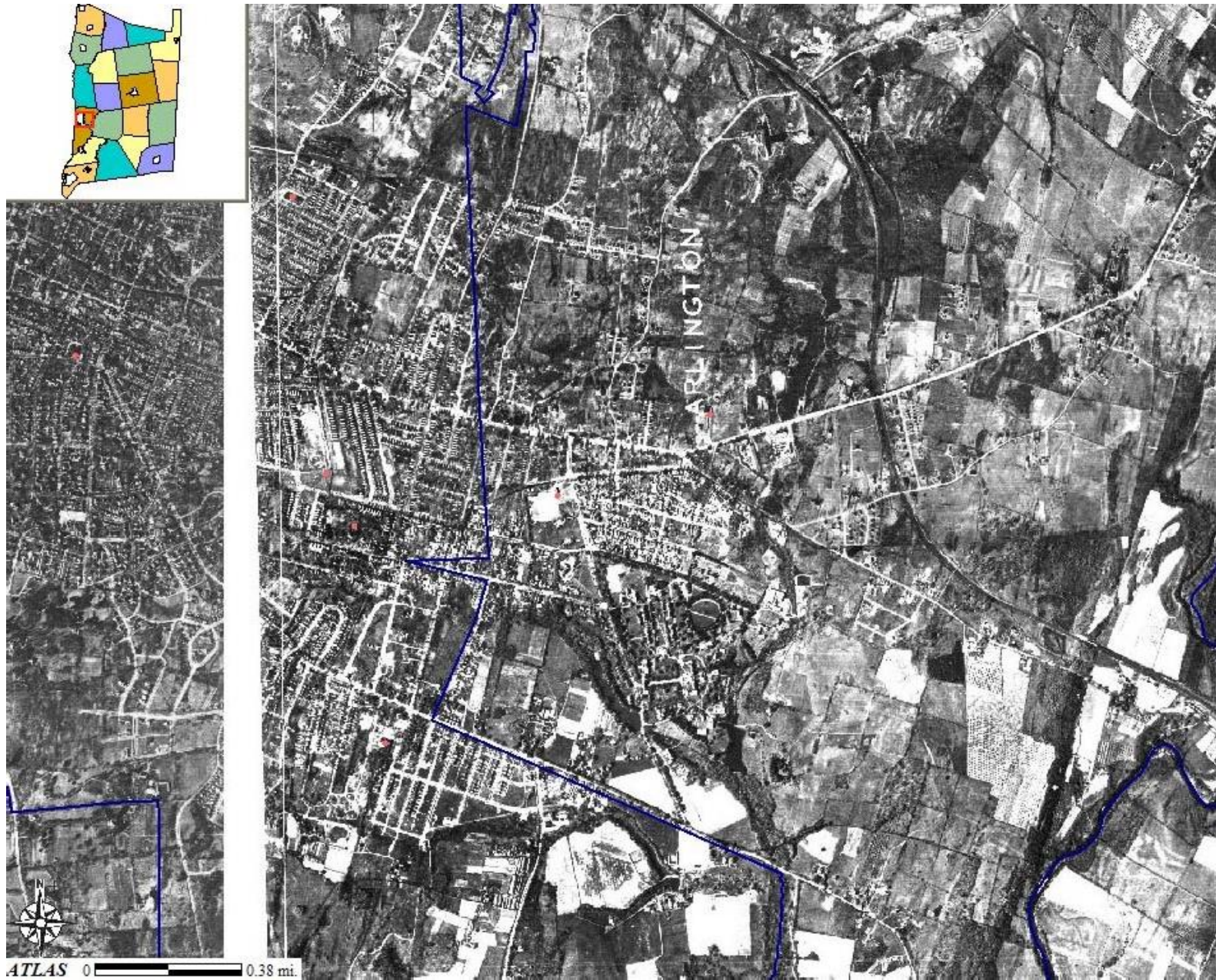
2004: Rt 9 south of Poughkeepsie (top of quarry is visible)



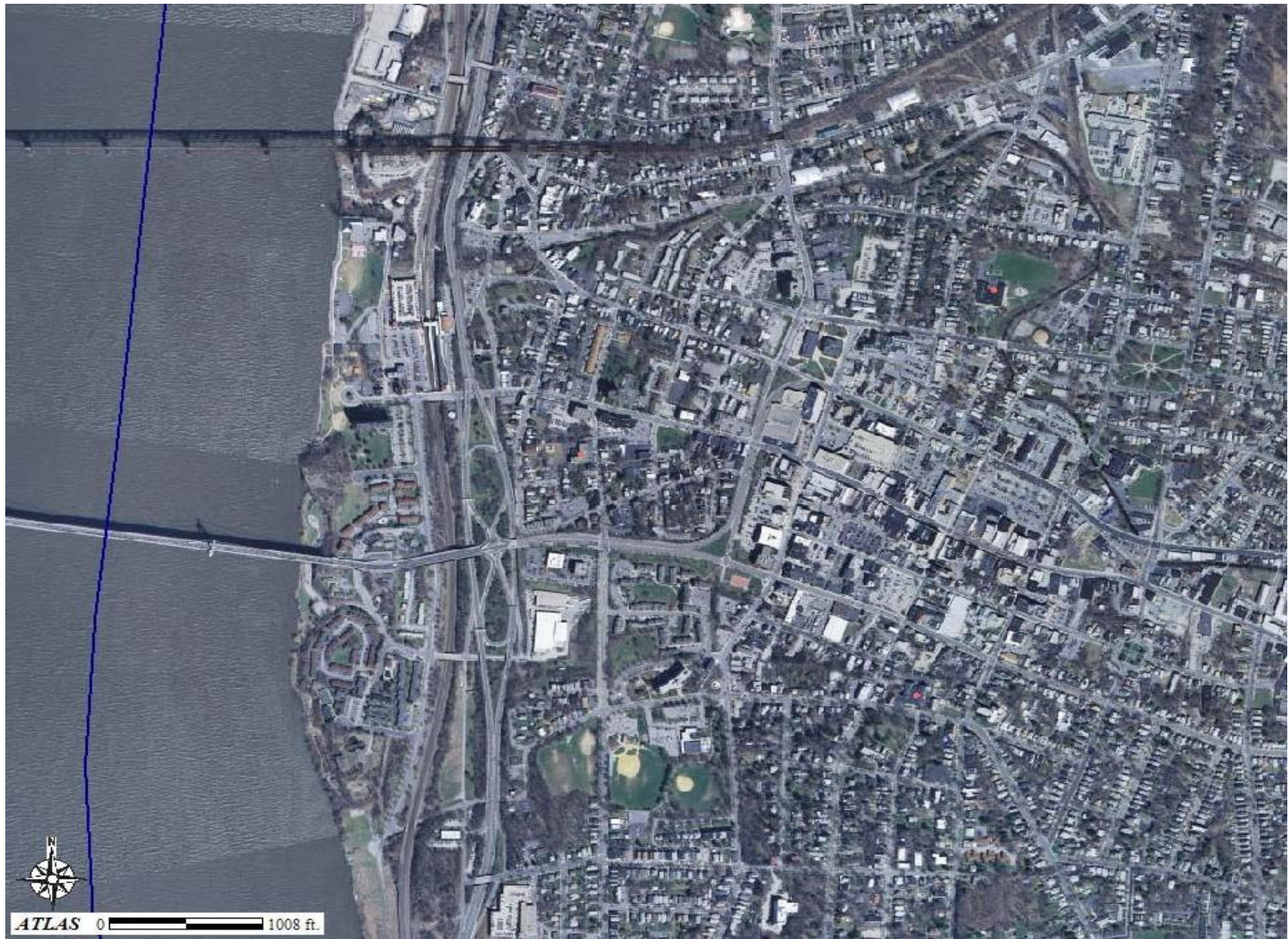
1936: Rt 9 south of Poughkeepsie



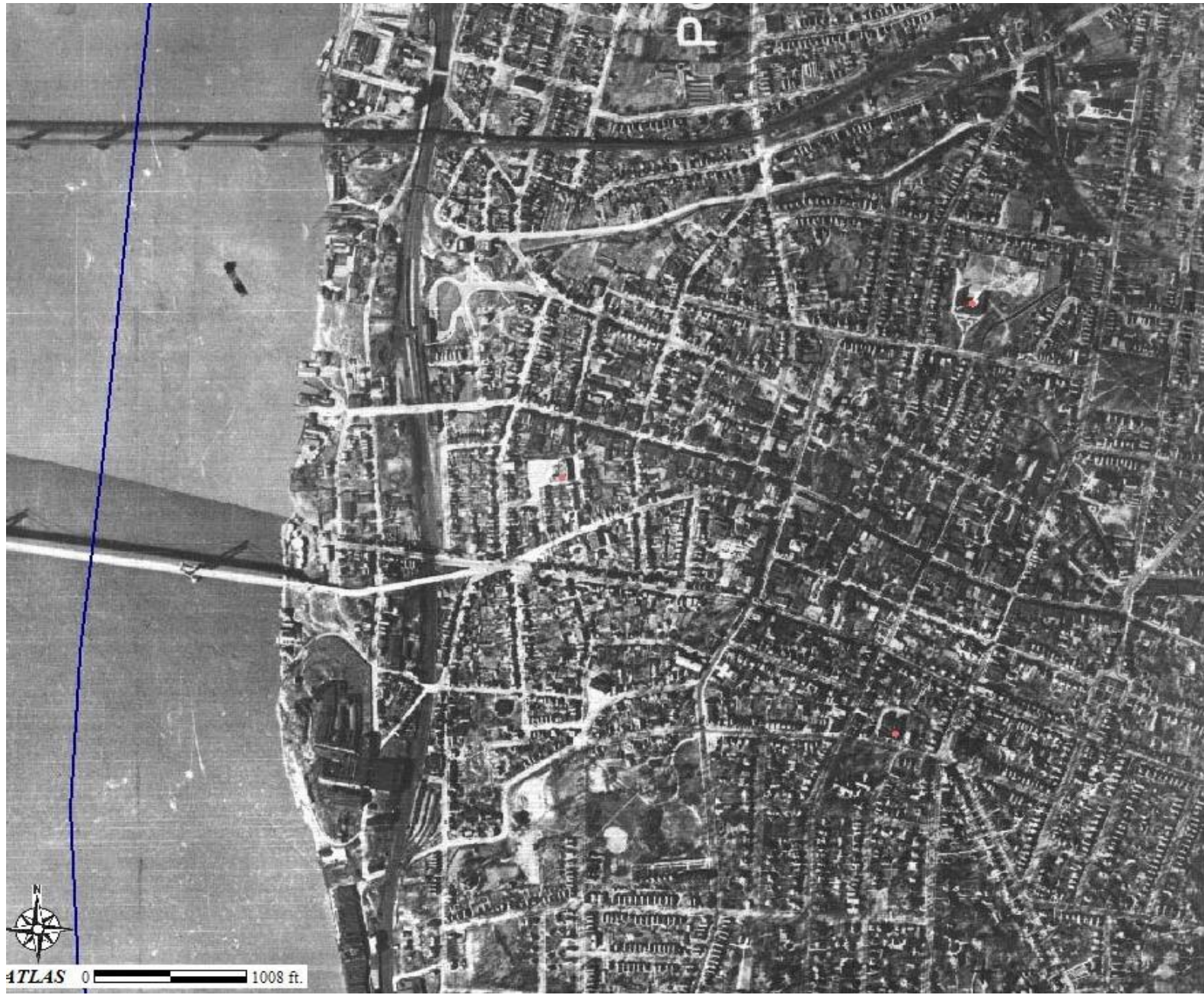
2004: City of Poughkeepsie (blue line is border with town)



1936: City of Poughkeepsie and border with town



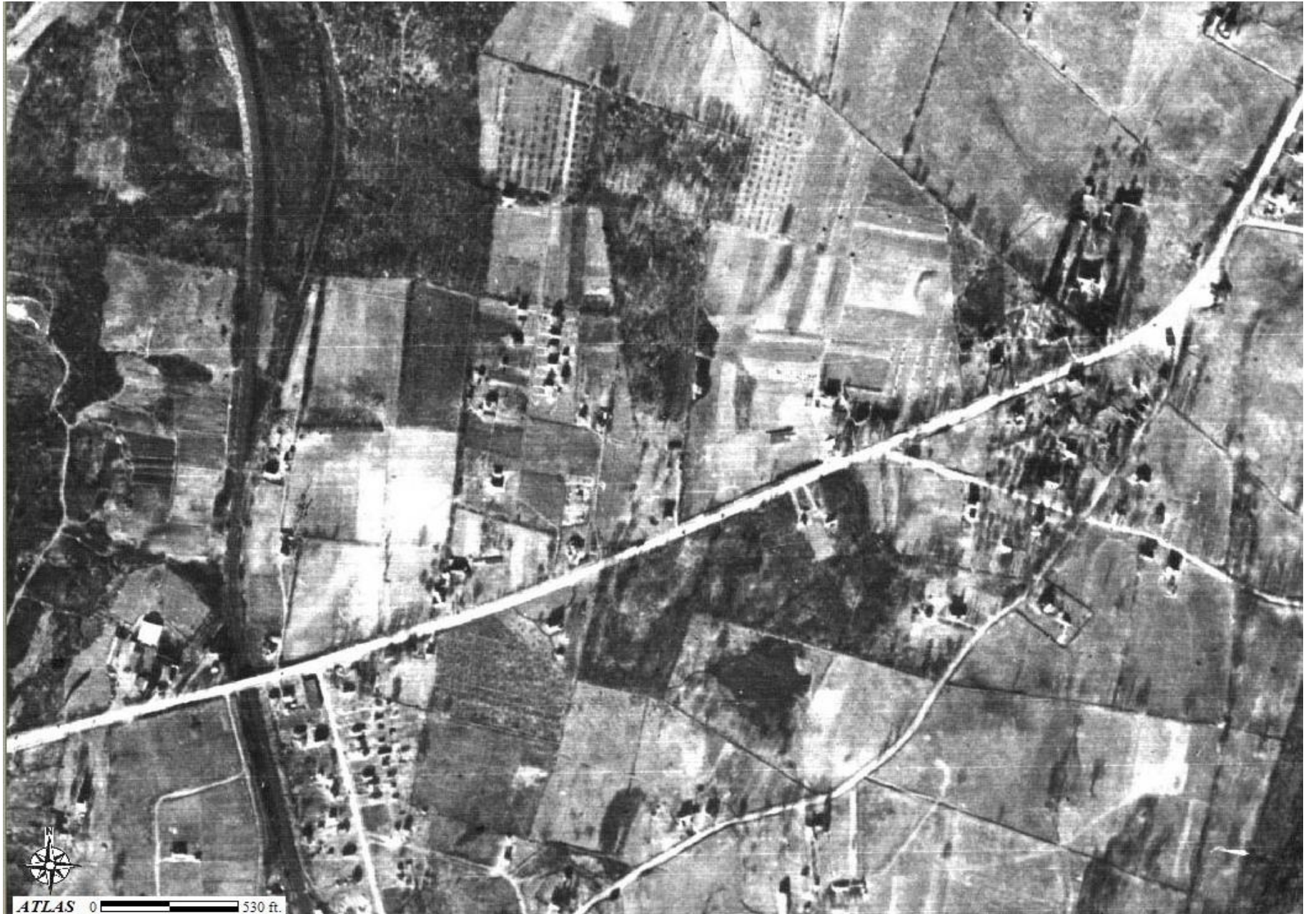
2004: City of Poughkeepsie with Mid-Hudson Bridge



1936: City of Poughkeepsie with Mid-Hudson Bridge



2004: Rt 44 leaving Poughkeepsie; Stop and Shop plaza is on the left hand side, Adams Fairacre Farms is in the middle of the photo



1936: Rt 44 leaving Poughkeepsie