

CARY SCIENCE CONVERSATION

VIRTUAL EVENT

Trees in Trouble

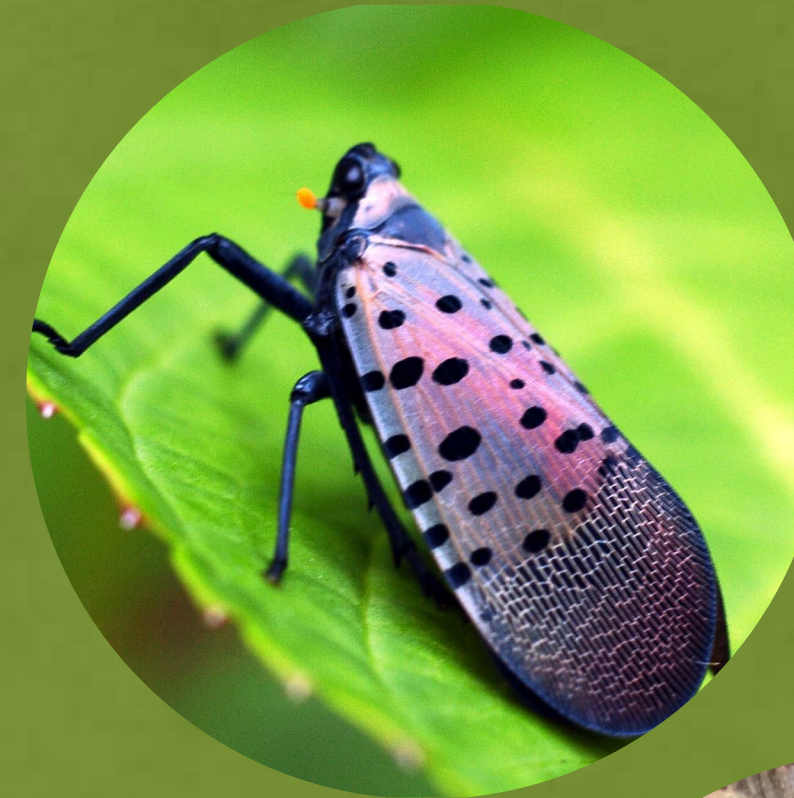
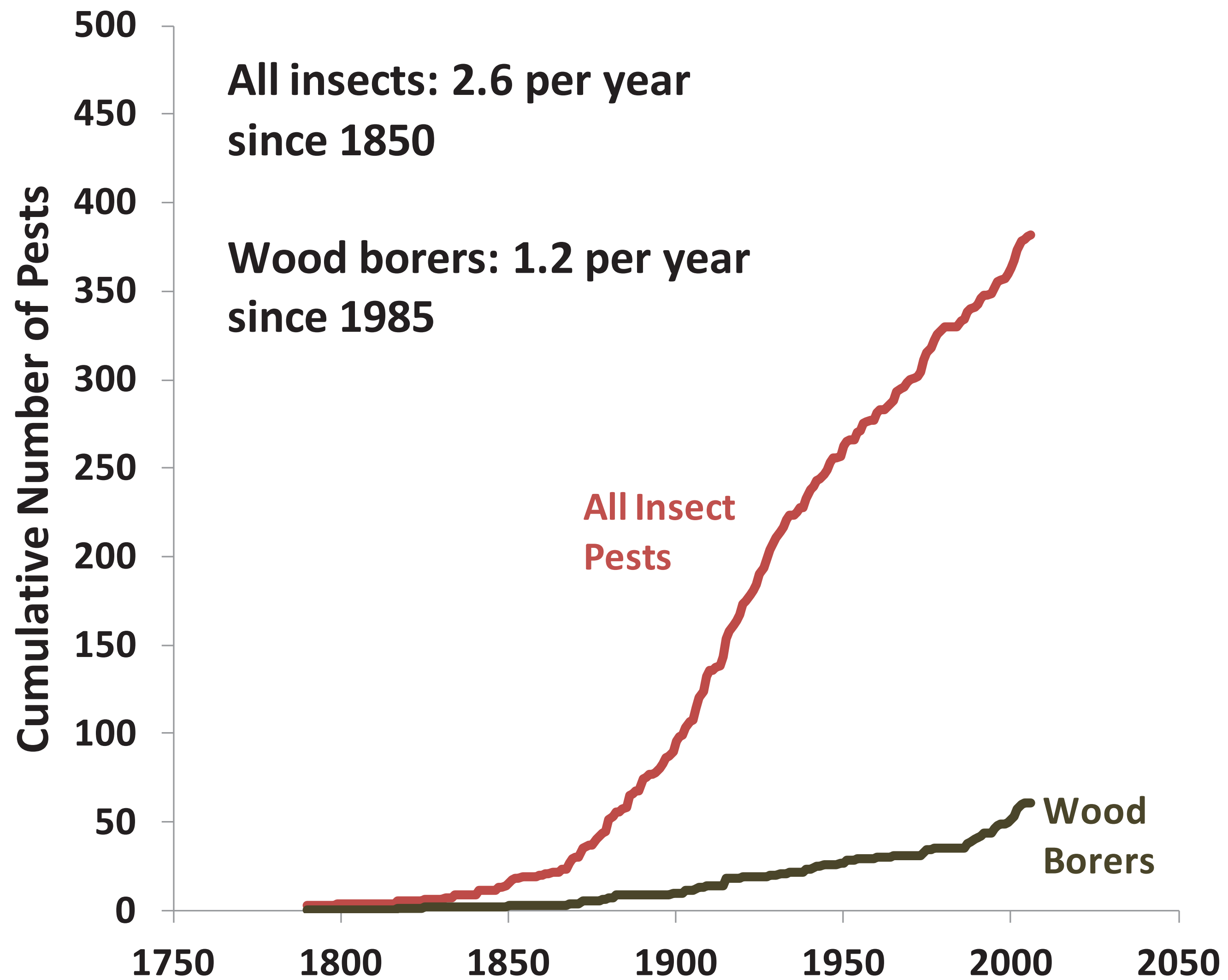
Presented by

Dr. Gary Lovett and Dr. Joshua Ginsberg

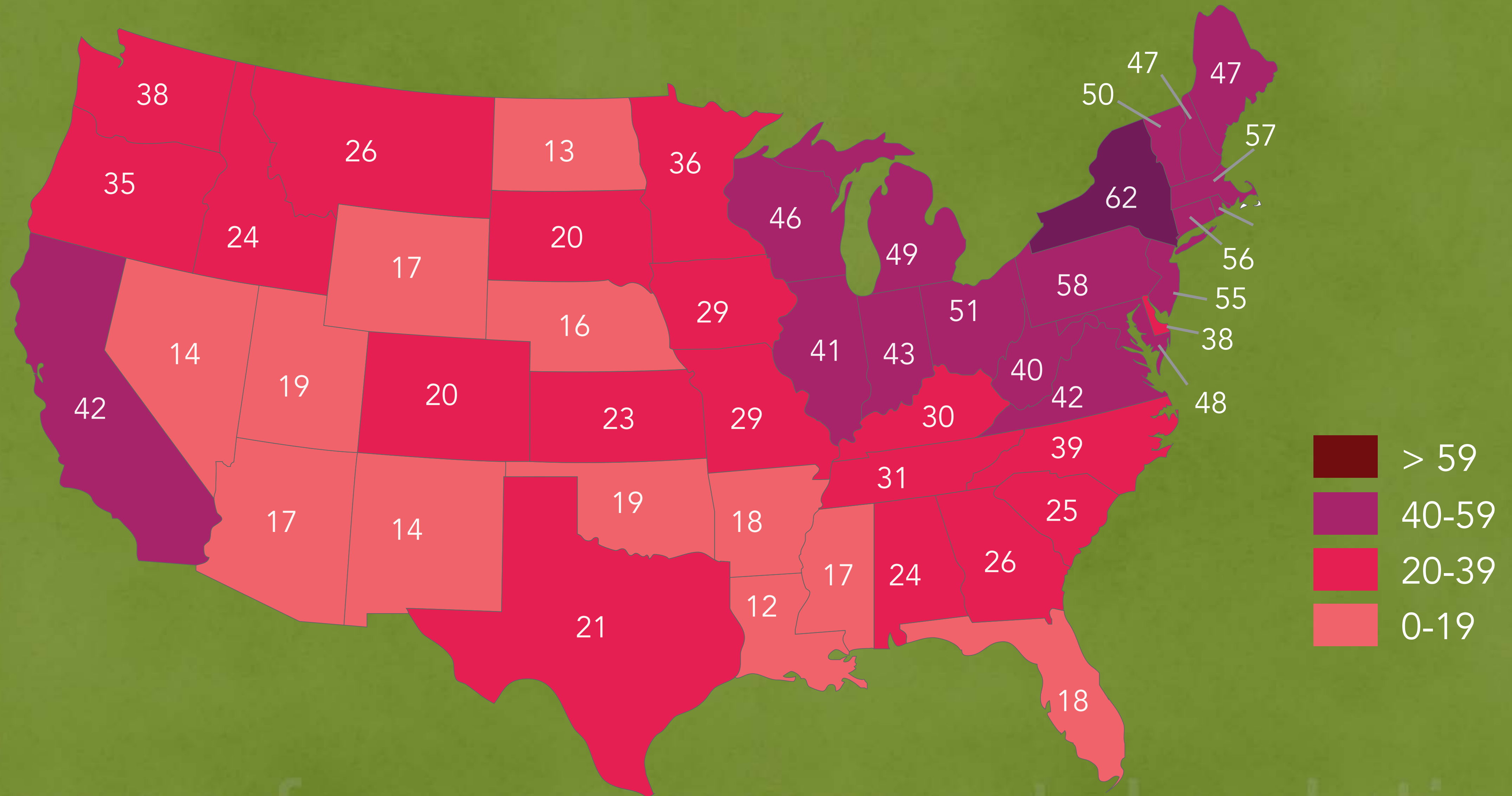
www.caryinstitute.org



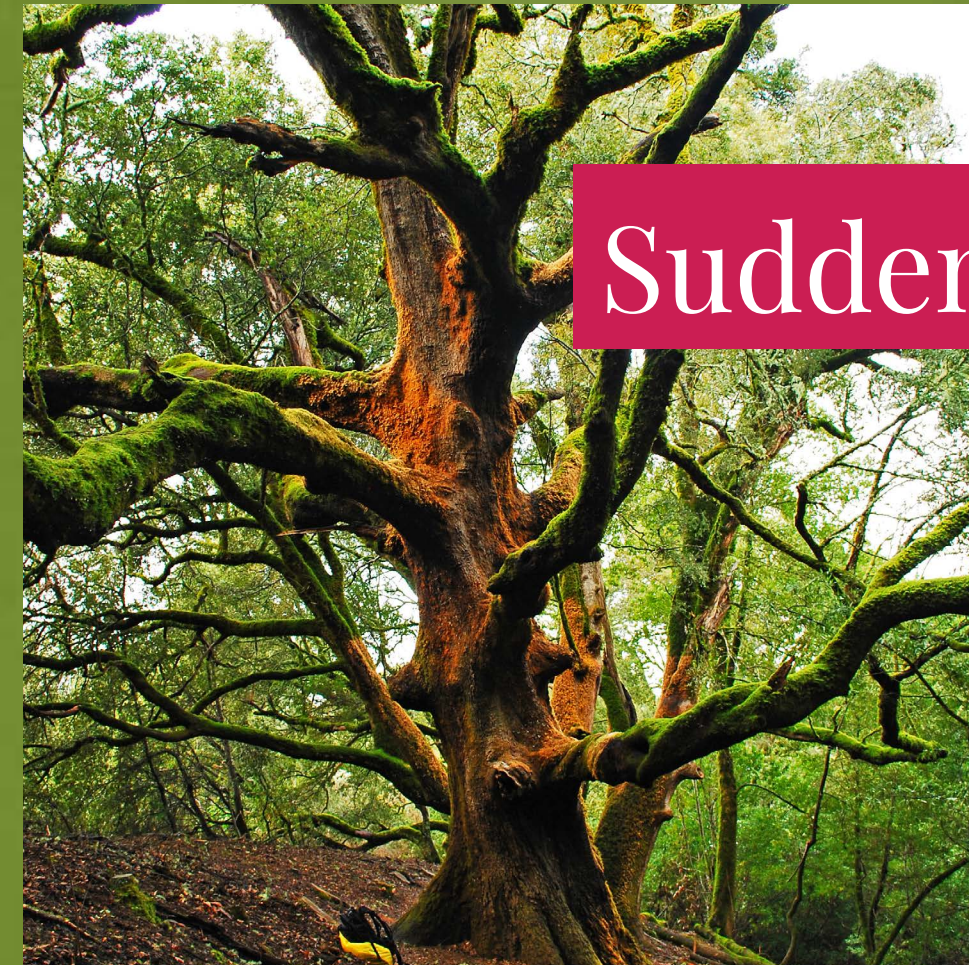
THE PROBLEM: CONTINUED INVASION BY FOREST PESTS



IMPORTED FOREST PESTS OCCUR IN EVERY STATE IN THE US



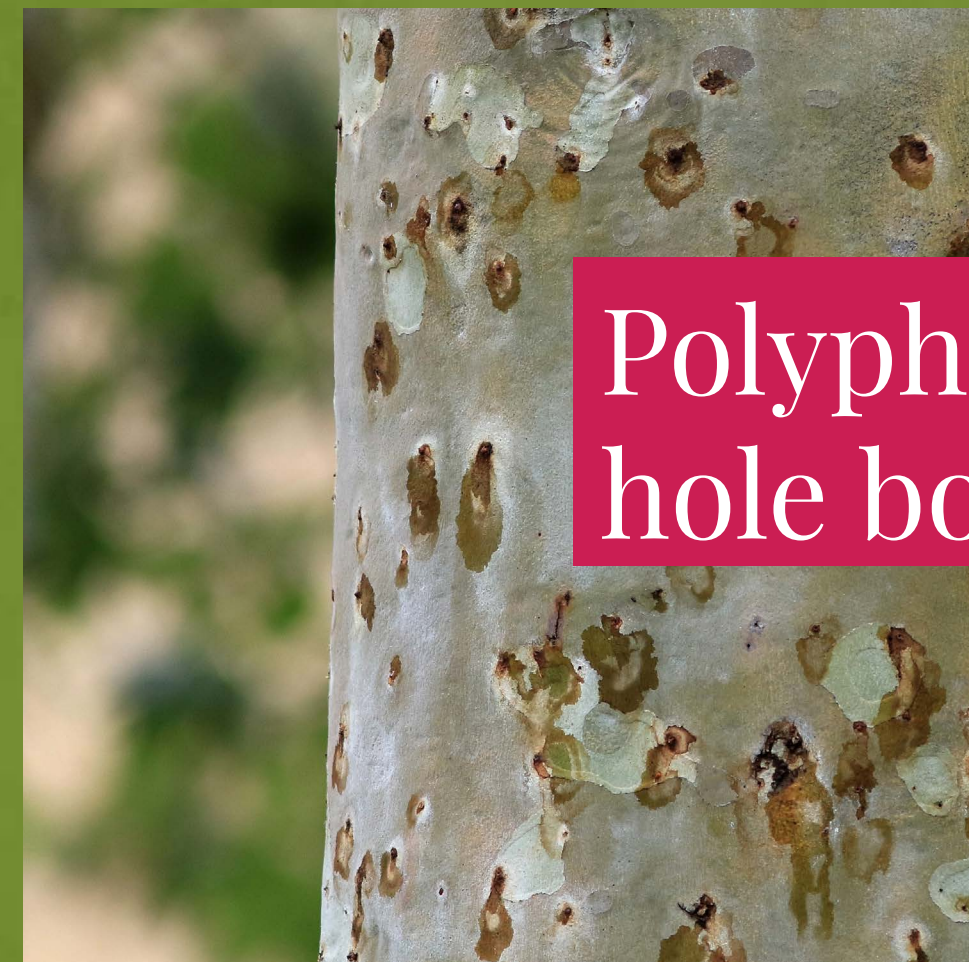
WESTERN US



Sudden oak death



White pine blister rust



Polyphagous shot hole borer

EASTERN US



Emerald ash borer

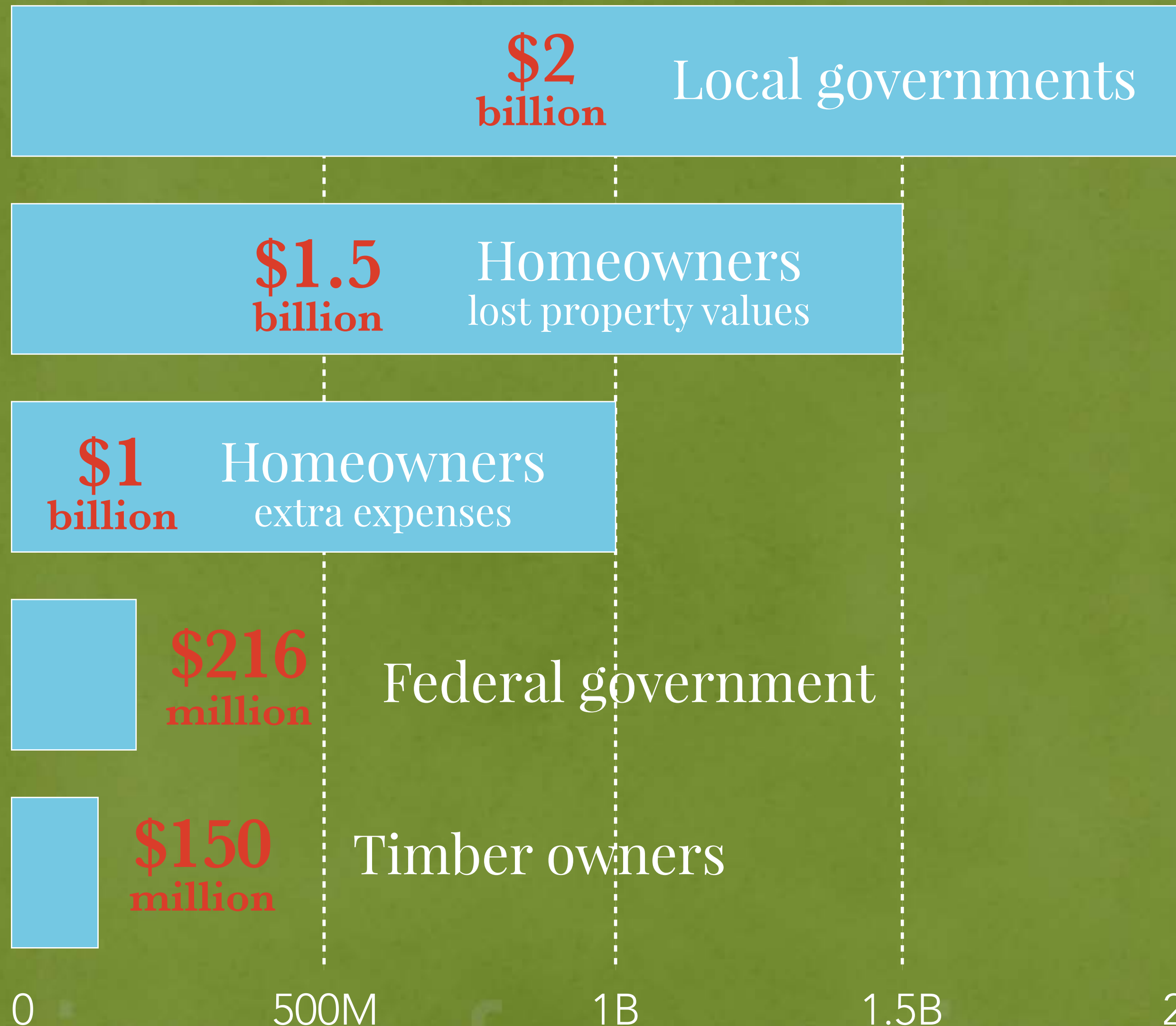


Laurel wilt



Spotted lanternfly

THE COSTS



LOSS OF ECOSYSTEM SERVICES





CASE: HEMLOCK WOOLLY ADELGID



Trees die



Old-growth forests decline; invasive plants proliferate



Stream warming may impact fish



Bird species decline



Changes in carbon storage and nutrient retention



INTERNATIONAL TRADE ROUTES

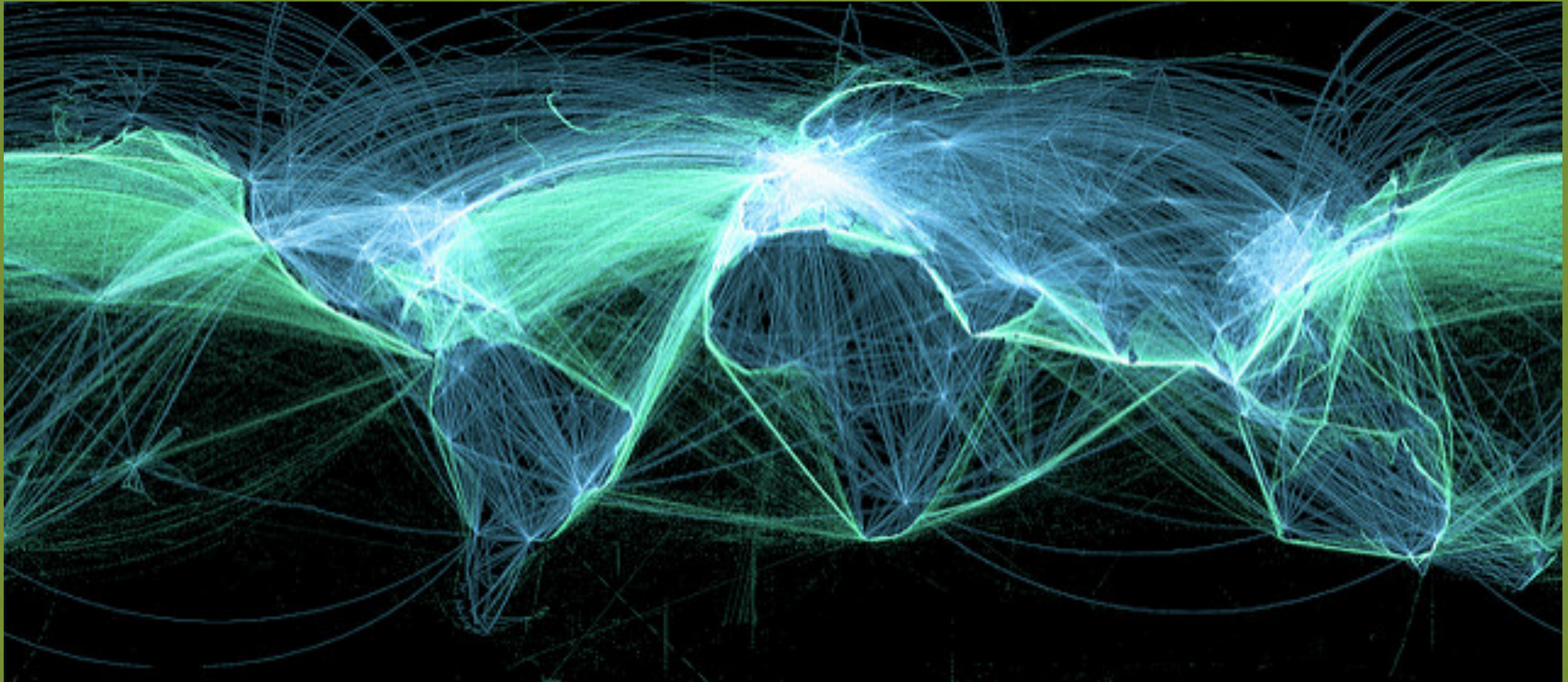


Image: :Dominic Alves

PATHWAYS TO ENTRY

Wood Pallets



Nursery Plants



POLICY BASED ON SCIENCE



5 POLICY ACTIONS THAT WILL HELP PREVENT NEW FOREST PESTS

- » Restrict the importation of live plants
- » Switch to pest-free packaging material for international shipments
- » Expand early detection and rapid response programs
- » Tighten enforcement of penalties
- » Expand international pest prevention programs with key trade partners



RECENT SUCCESSES



More stringent enforcement of wood packaging regulations



Comprehensive report on the issue and possible solutions



Measures that importers can use to minimize pests in wood packaging



WHAT CAN YOU DO?

- Buy native plants
- Don't move firewood

Use Your Voice

Speak up! Contact federal representatives and national environmental organizations and ask them to take action



Cary Institute
of Ecosystem Studies

Questions for Gary Lovett?

www.treesmarttrade.org



@treeSMARTtrade

This program was sponsored in part by



Heather Croner
Real Estate

Sotheby's
INTERNATIONAL REALTY

A lush green forest with tall trees and a path where a group of hikers is walking away from the camera. The forest is dense with moss-covered trees and ferns. The hikers are wearing various colors of clothing and backpacks. The scene is captured from a low angle, looking down the path.

Your gift **today** will help save trees **tomorrow**.

www.caryinstitute.org/donate